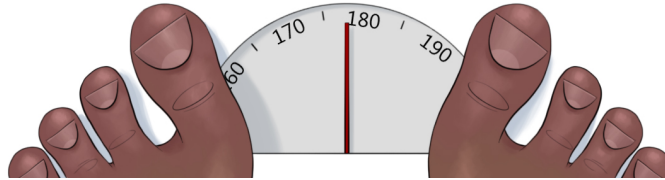


Self Check 2.2

Due No due date**Points** 6**Questions** 6**Time limit** None**Allowed attempts** Unlimited

Instructions



This exercise will help you check your knowledge. Please take it as many times as you need to master the concepts. Select the best answer for each question.

[Take the survey again](#)

⚠ Correct answers are hidden.

Score for this attempt: **6** out of 6

Submitted 18 Mar 2019 at 10:29

This attempt took 3 minutes.

For the next four questions, classify each of the following as a contact or a long-range force by choosing the appropriate letter.

Question 1

A rope is tied to a box, and you pull on the rope.

You Answered

☒ long-range☐ contact**Question 2**

Earth exerts a gravitational force on a box.

☐ contact

You Answered

☒ long-range**Question 3**

You slam on the brakes to your bicycle and come to a stop.

You Answered

☒ contact☐ long-range**Question 4**

You exert a force on a box by pushing it with your hands.

☐ long-range

You Answered

☒ contact

Question 5

How much does a 30 kg file cabinet weigh?

☐ 30 g☐ 3 kg☐ 15 kg☒ 300 newtons

Feedback: $F_g = mg$, so $F_g = (30 \text{ kg})(10 \text{ N/kg}) = 300 \text{ N}$.

For this question you will need to sketch your answer on a sheet of paper.

Unanswered

Question 6

A computer sits at rest on a level desk. Sketch a free-body diagram.

Your answer:



Survey Score: **6** out of 6

